

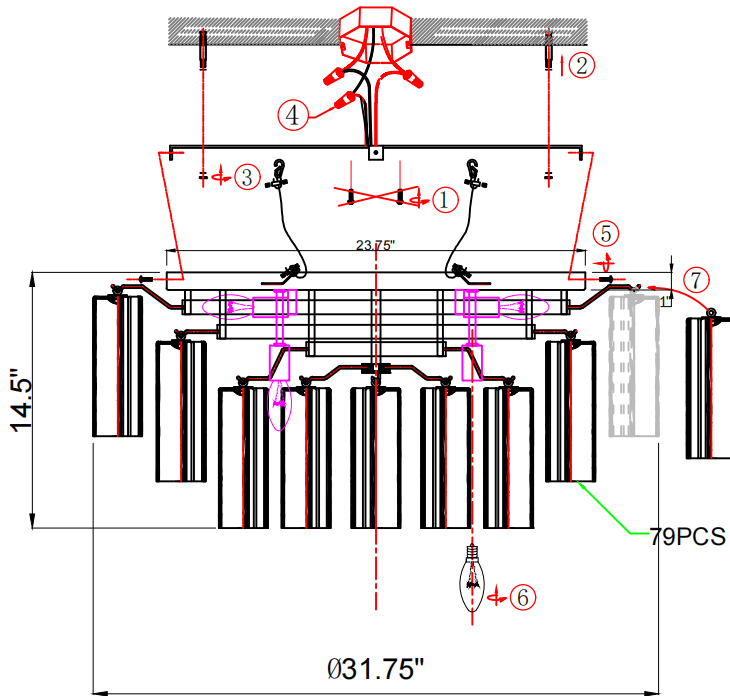
# CRYSTORAMA

LIGHTING THE WAY FOR SIXTY YEARS



Crystorama.com

## ASSEMBLY INSTRUCTION MODEL ADD-331-AG-AM



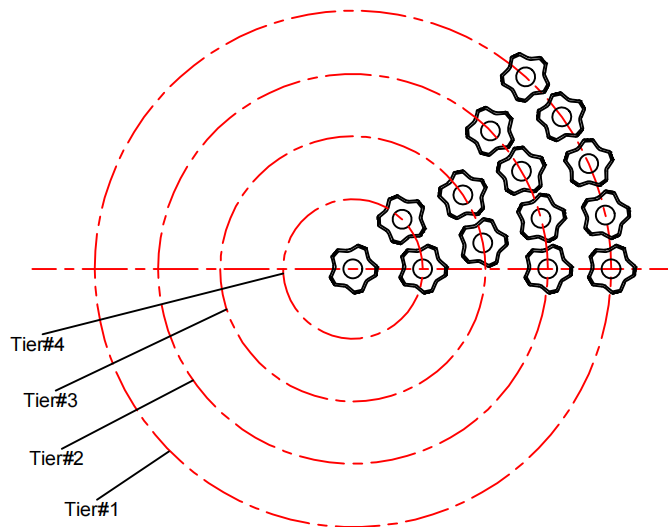
All electrical components must be installed by a licensed electrician in accordance with the National Electric Code and the appropriate local electrical codes.



You will need 16 Candelabra Base Bulb 40 Watts Recommended 60 Watts Max. USE LED BULBS FOR EXTENDED USE ( This fixture is Damp rated)

### How to Install

1. Place the mounting plate over the outlet box and mark four points on the ceiling at the same distance as between the holes on the mounting plate.
2. Drill the holes at the marked points and insert the anchors into it.
3. Attach the mounting plate onto the outlet box and secure with the anchor screws.
4. Hang the canopy onto the mounting bracket by hooking the cable wire into the slots as shown. After the wire connection is made, raise the canopy up to cover the outlet box and secure with the screws.
5. Install recommended bulb into the socket.
7. Starting from the bottom. Dress the glass as illustrated.



Dress the glass from tier #4

### Glass Sets

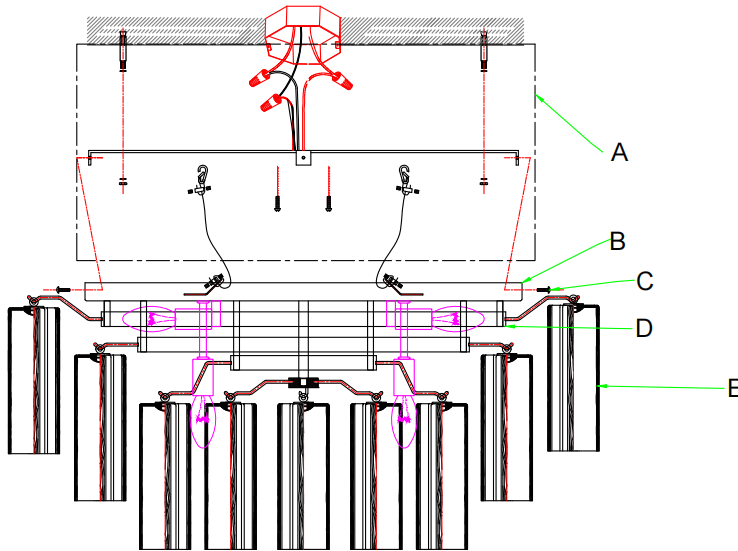
1. 79pcs Amber glass 2 .75x7 .75"

**WARNING:** This product can expose you to Lead, which is known to the State of California to cause cancer and/or birth defects or reproductive harm. For more information go to [www.P65Warnings.ca.gov](http://www.P65Warnings.ca.gov)



## PART NUMBER MODEL ADD-331-AG-AM

### Part Number



#### Part Numbers

- A. (1)-Mounting hardware:
  - (1)mounting bracket
  - (3)wire nuts
  - (4)wall anchor/screw
- B. (1)-Canopy,D23.75\*H1"  
(XBN331AGCAN23.625IN)
- C. (4)-Screws
- D. (1)-Frame
- E. (79)-Amber Glass,D2.75" \* H7.75"  
(XBN300AGAMGLA7.75IN)