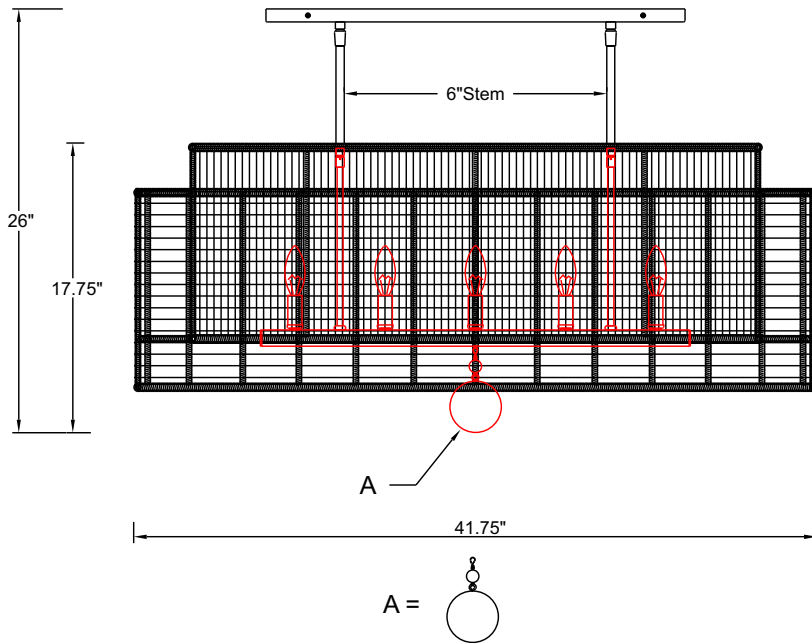


# CRYSTORAMA

LIGHTING THE WAY FOR SIXTY YEARS



## ASSEMBLY INSTRUCTION MODEL #JAY-A5007-BS



All electrical components must be installed by a licensed electrician in accordance with the National Electric Code and the appropriate local electrical codes.



You will need 5-Candelabra Base Bulb  
40 Watts Recommended 60 Watts Max.  
USE LED BULBS FOR EXTENDED USE  
THIS FIXTURE IS DAMP RATED

### How to install

1. Place the mounting plate over the outlet box and mark two points on the ceiling with same distance as between the two holes on the mounting plate.
2. Drill the holes at the marked points then insert the anchors into the holes. Attach the mounting plate onto the wall using the two outlet box screws. Insert the anchor screws into the anchors and tighten it with the screwdriver.
3. Decide the preferred hanging height and choose the correct length of rod needed.
4. Slip the check ring and the rods through the wires and connect the rods together. Screw one end of the rod assembly onto the top of the frame, the other end onto the swivel.
5. Tighten the hex nut to secure the swivel onto the canopy.
6. Raise the fixture up to the ceiling and do the wire connections. Secure the canopy onto the mounting plate using the screws.
7. Hang the wood ball "A" onto the bottom of fixture.

Hangings

A.1 Set. 80mm

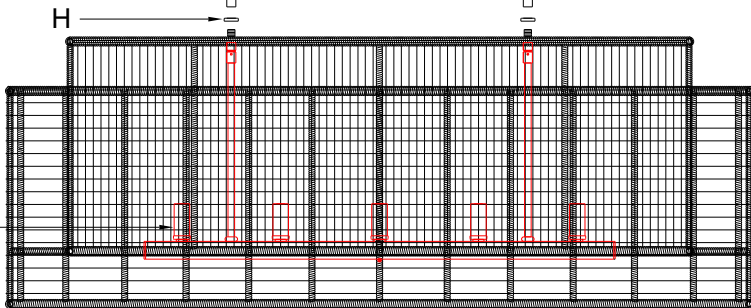
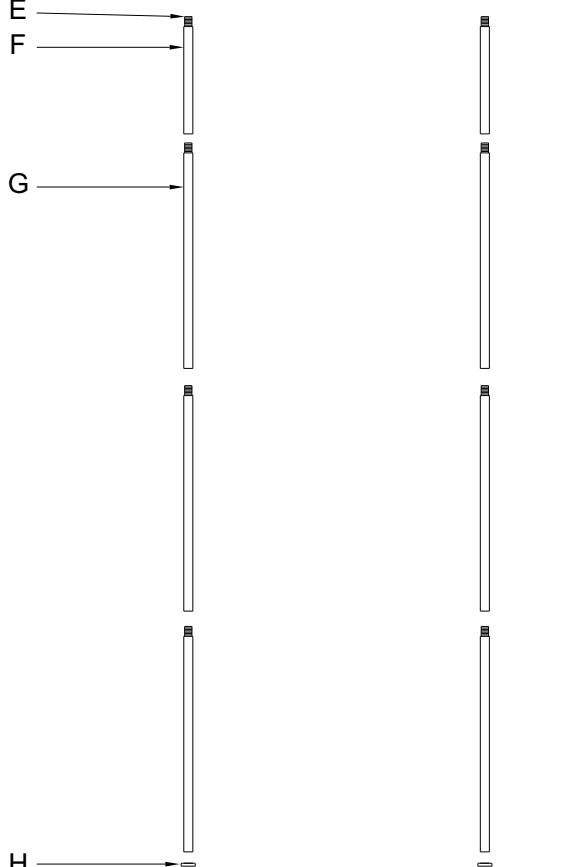
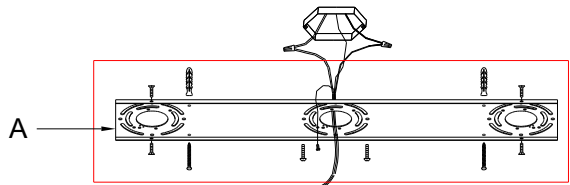
**WARNING:** This product can expose you to Lead, which is known to the State of California to cause cancer and/or birth defects or reproductive harm. For more information go to [www.P65Warnings.ca.gov](http://www.P65Warnings.ca.gov).

# CRYSTORAMA

LIGHTING THE WAY FOR SIXTY YEARS



PART NUMBER MODEL #JAY-A5007-BS



## Part Number

- A. (1) - Mounting Hardware
- B. (1) - Canopy(L25.6",W4.5",H8") #XRE5007BSCAN25.6IN
- C. (4) - Screw
- D. (2) - Swivel
- E. (10) - Threaded Nipple
- F. (2) - Hanging Rod(6",12.7mm) #XRE5007BSROD6IN
- G. (6) -Hanging Rod(12",12.7mm) #XRE5007BSROD12IN
- H. (2) -Check Ring
- I. (4) - Candle Sleeve(W0.87",H1.97") #XRE5004BSCDL1.97IN
- J. (1) - Wood Ball #XRE5006BSBALL80MM